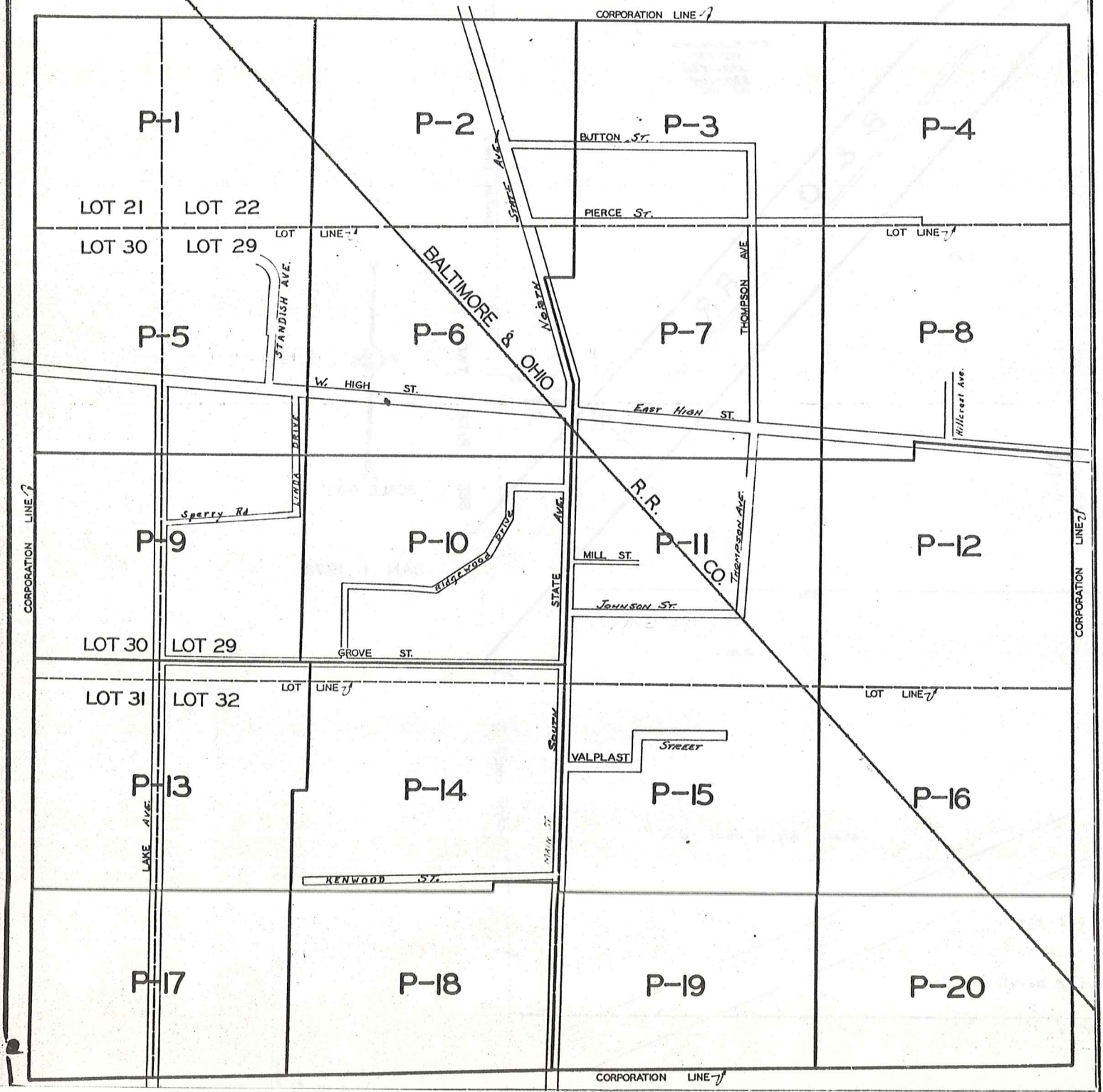
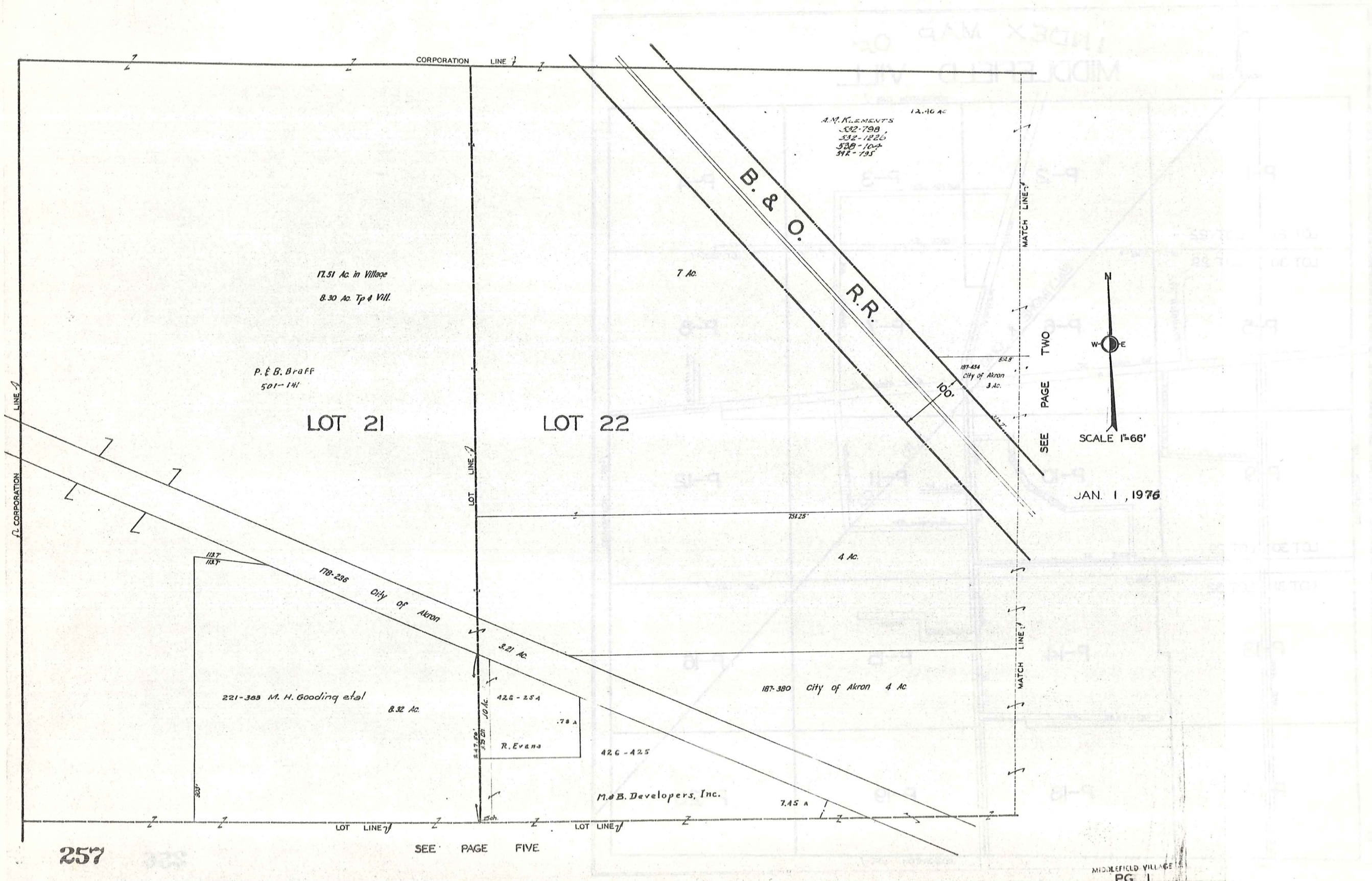
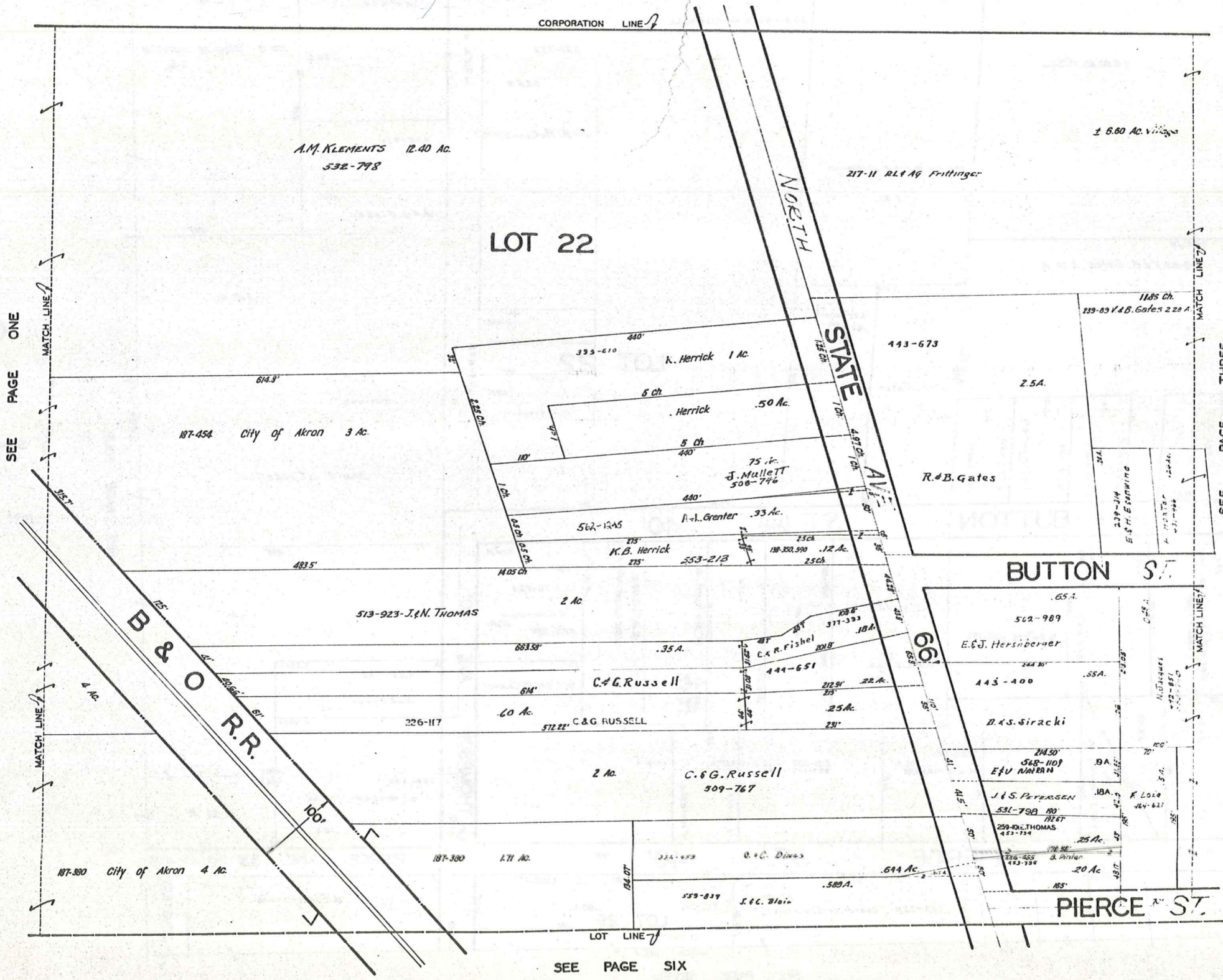


INDEX MAP OF MIDDLEFIELD VILL.

SCALE 1"=330'







SEE PAGE ONE

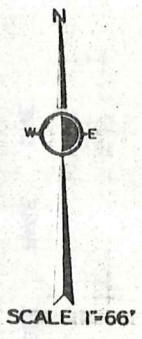
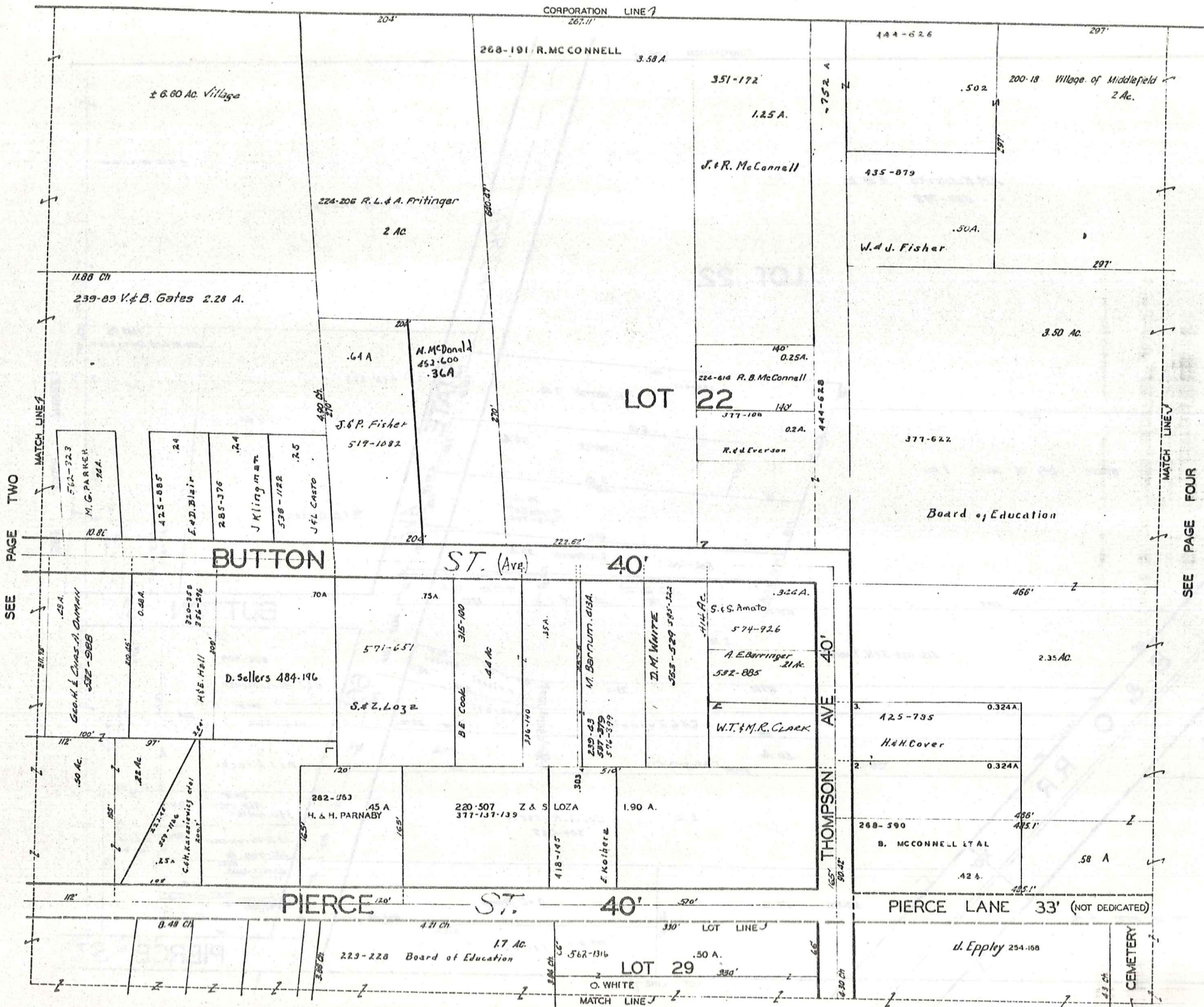
SEE PAGE THREE



SCALE 1"=66'

JAN 1, 1973

SEE PAGE SIX

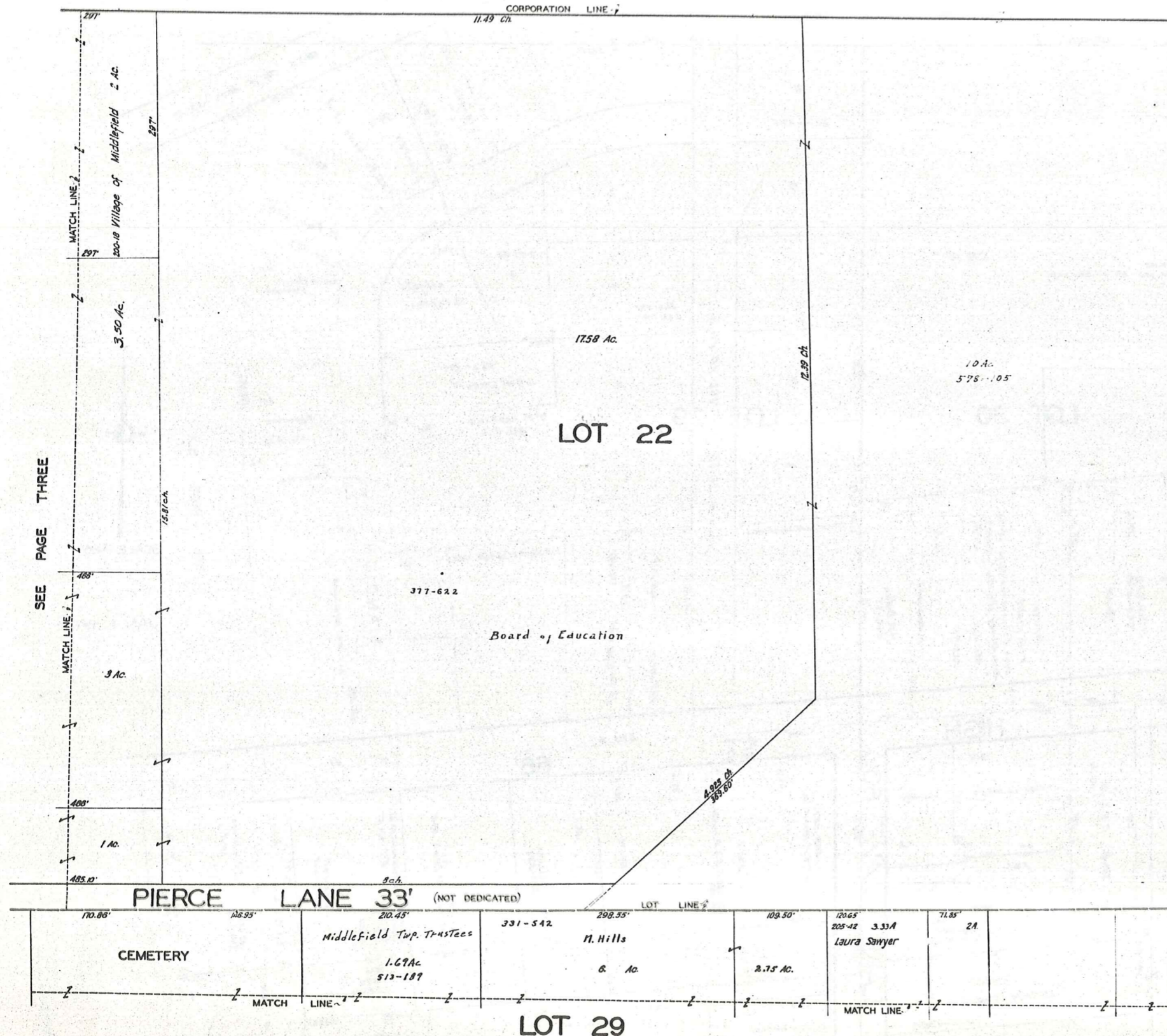


JAN 1, 1976

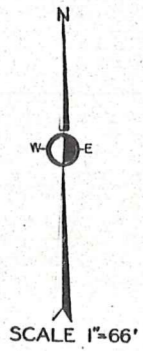
SEE PAGE TWO

SEE PAGE FOUR

SEE PAGE SEVEN



SEE PAGE THREE

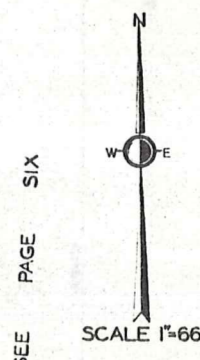
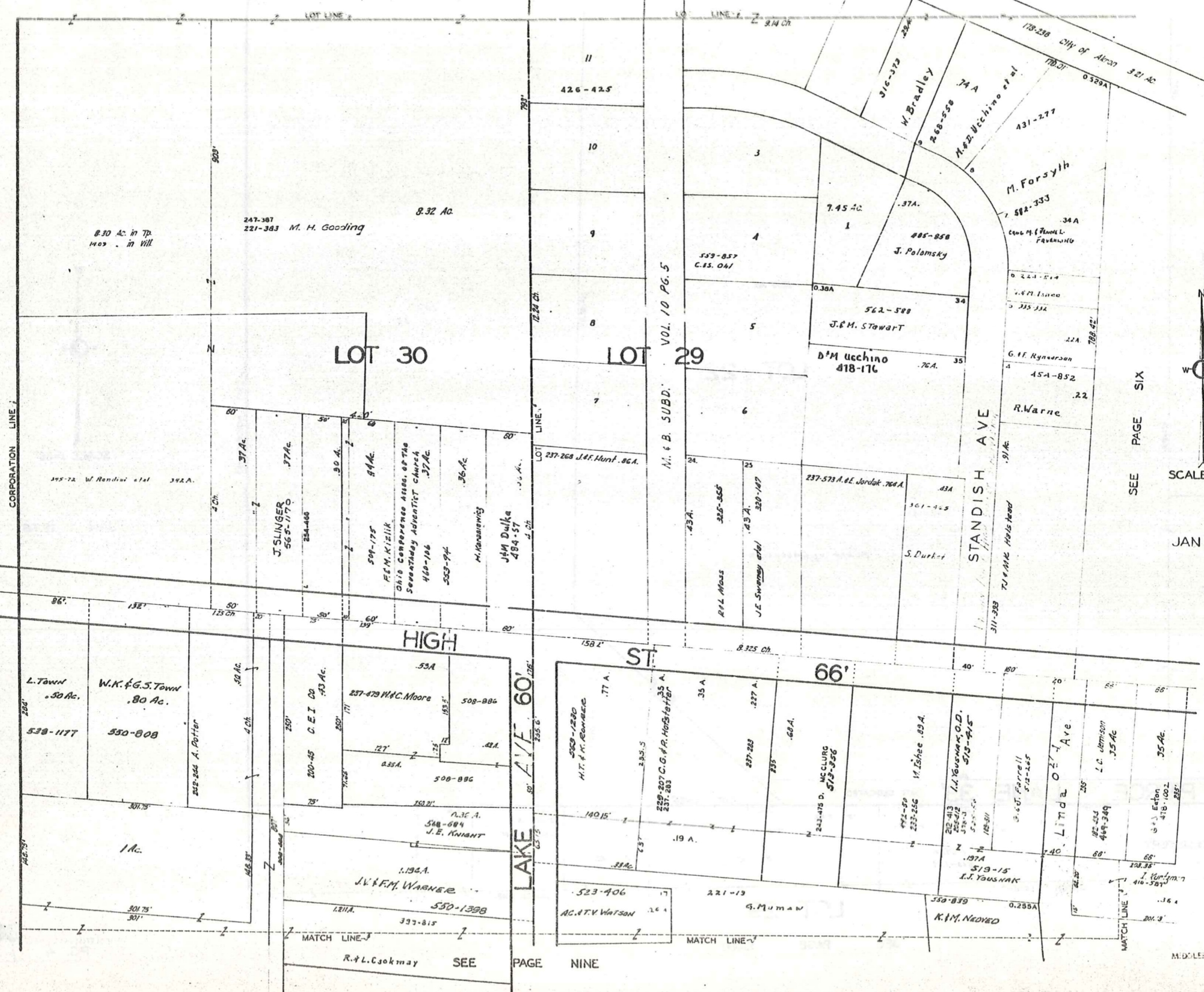


JAN 1, 1976

SEE PAGE EIGHT

MIDDLEFIELD VILLAGE

SEE PAGE ONE

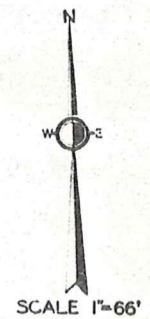
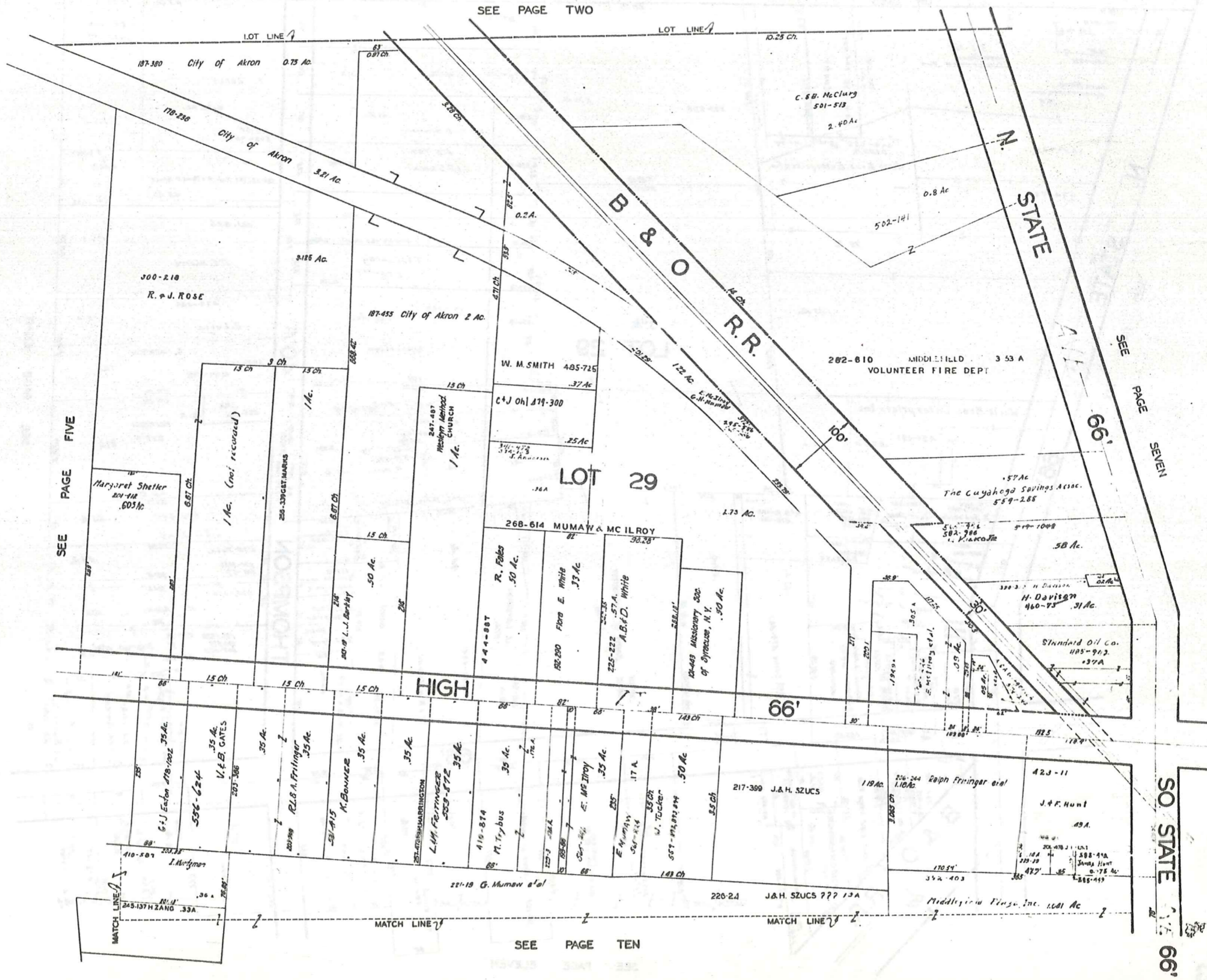


SEE PAGE SIX

JAN. 1, 1976

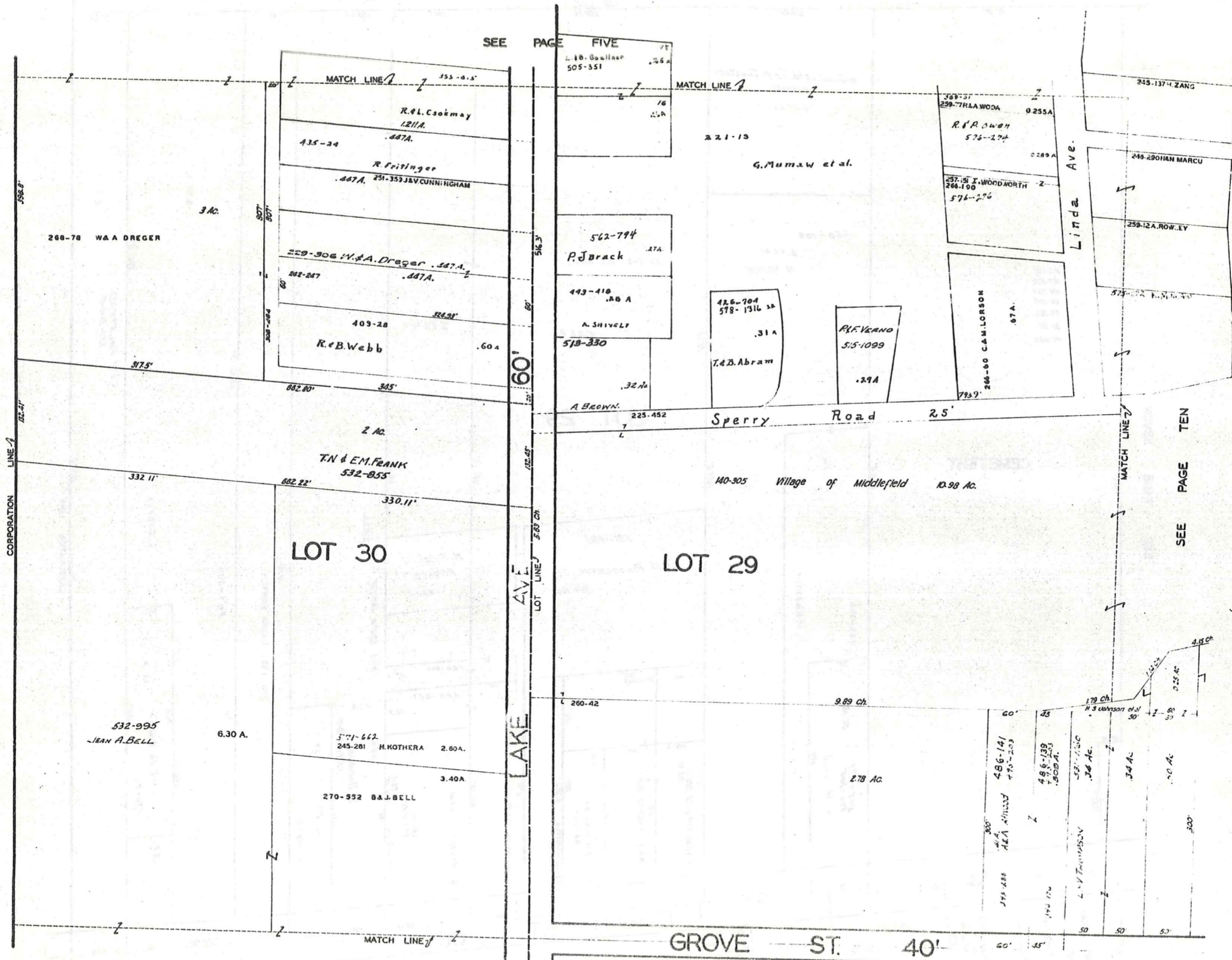
MIDDLEFIELD VILLAGE

SEE PAGE TWO



JAN 1, 1975

SO STATE 66'



SEE PAGE FIVE

SEE PAGE TEN

60'

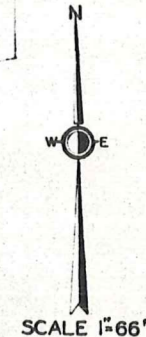
LAKE AVE

LOT 29

LOT 30

GROVE ST. 40'

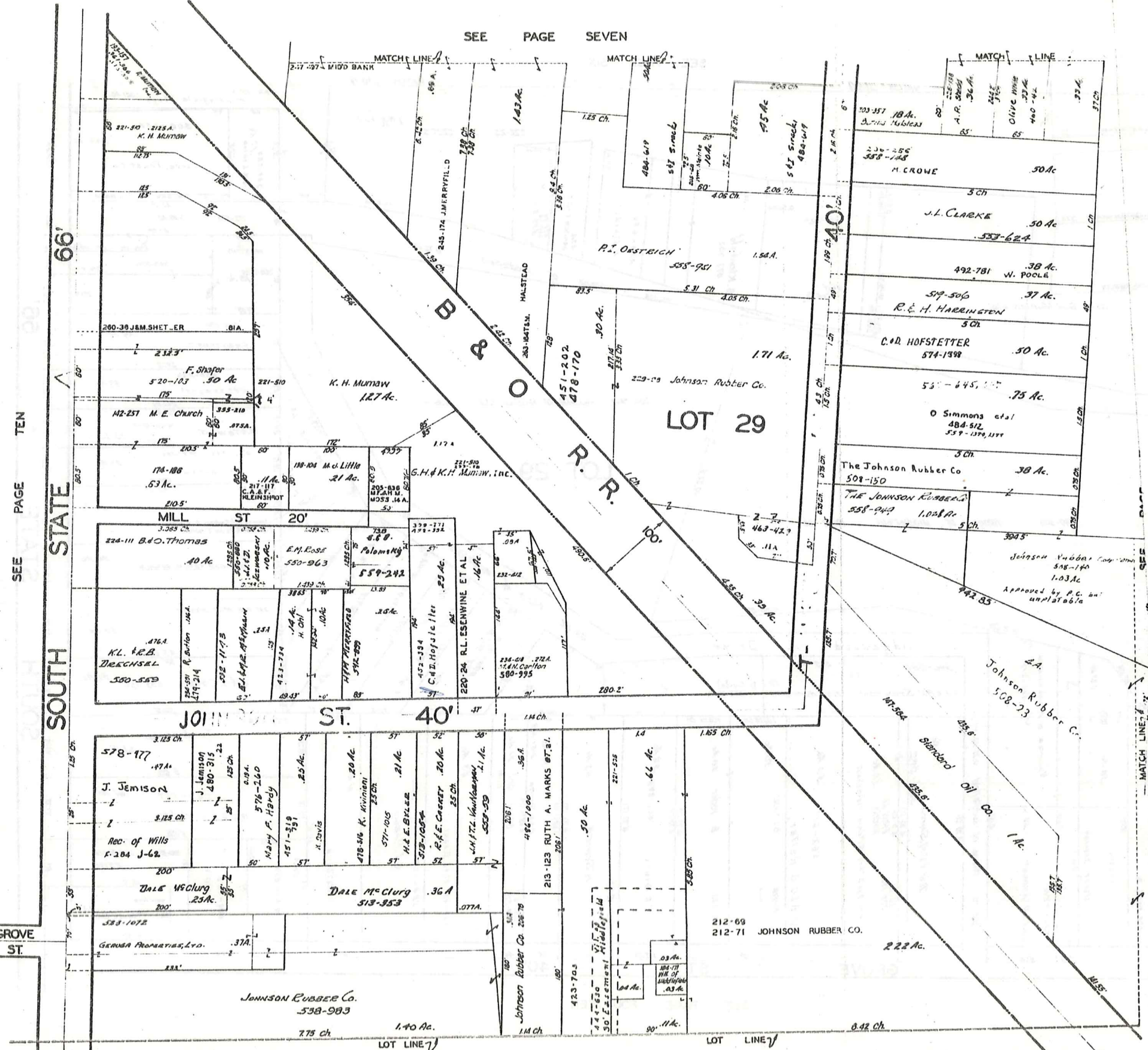
SEE PAGE THIRTEEN



JAN. 1, 1978

MIDDLEFIELD VILLAGE

SEE PAGE SEVEN



SEE PAGE TEN

66'

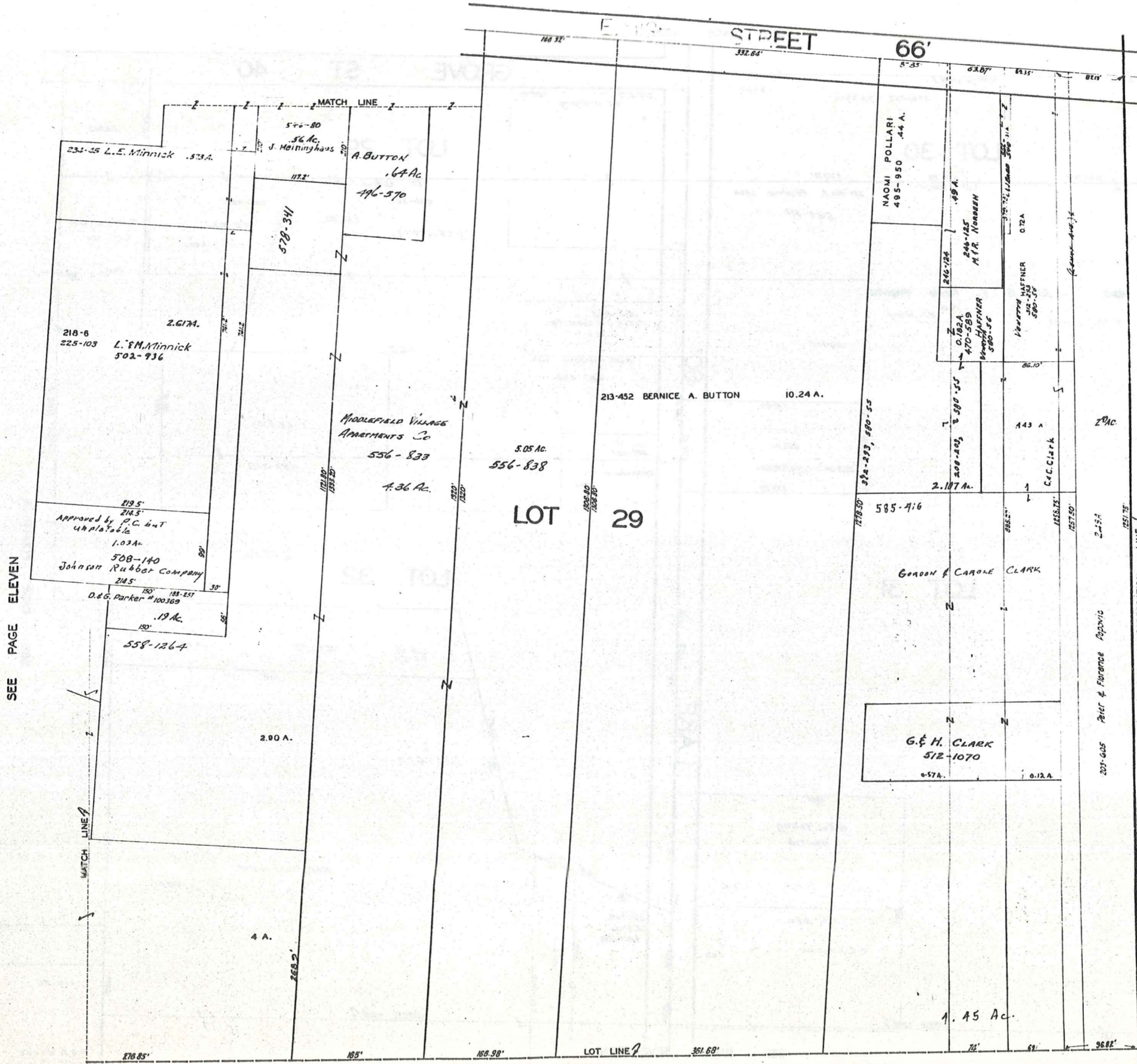
SOUTH STATE

JOHNSON ST. 40'

GROVE ST.

SEE PAGE FIFTEEN

SEE PAGE EIGHT



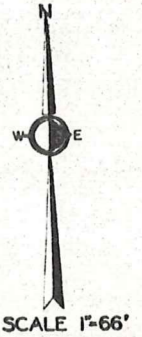
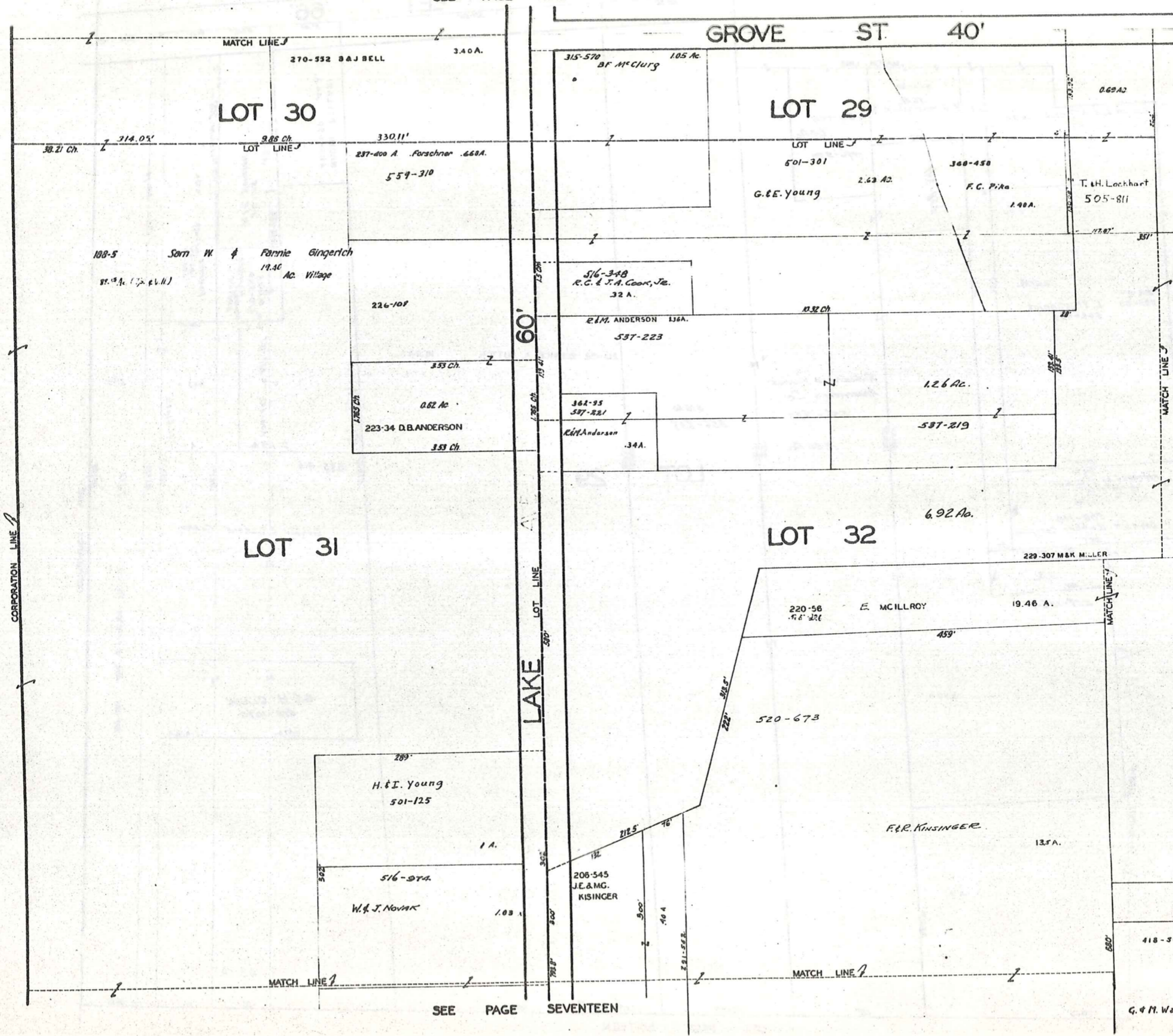
SEE PAGE ELEVEN

SEE PAGE SIXTEEN



JAN. 1, 1970

SEE PAGE NINE



JAN 1, 1976

SEE PAGE FOURTEEN

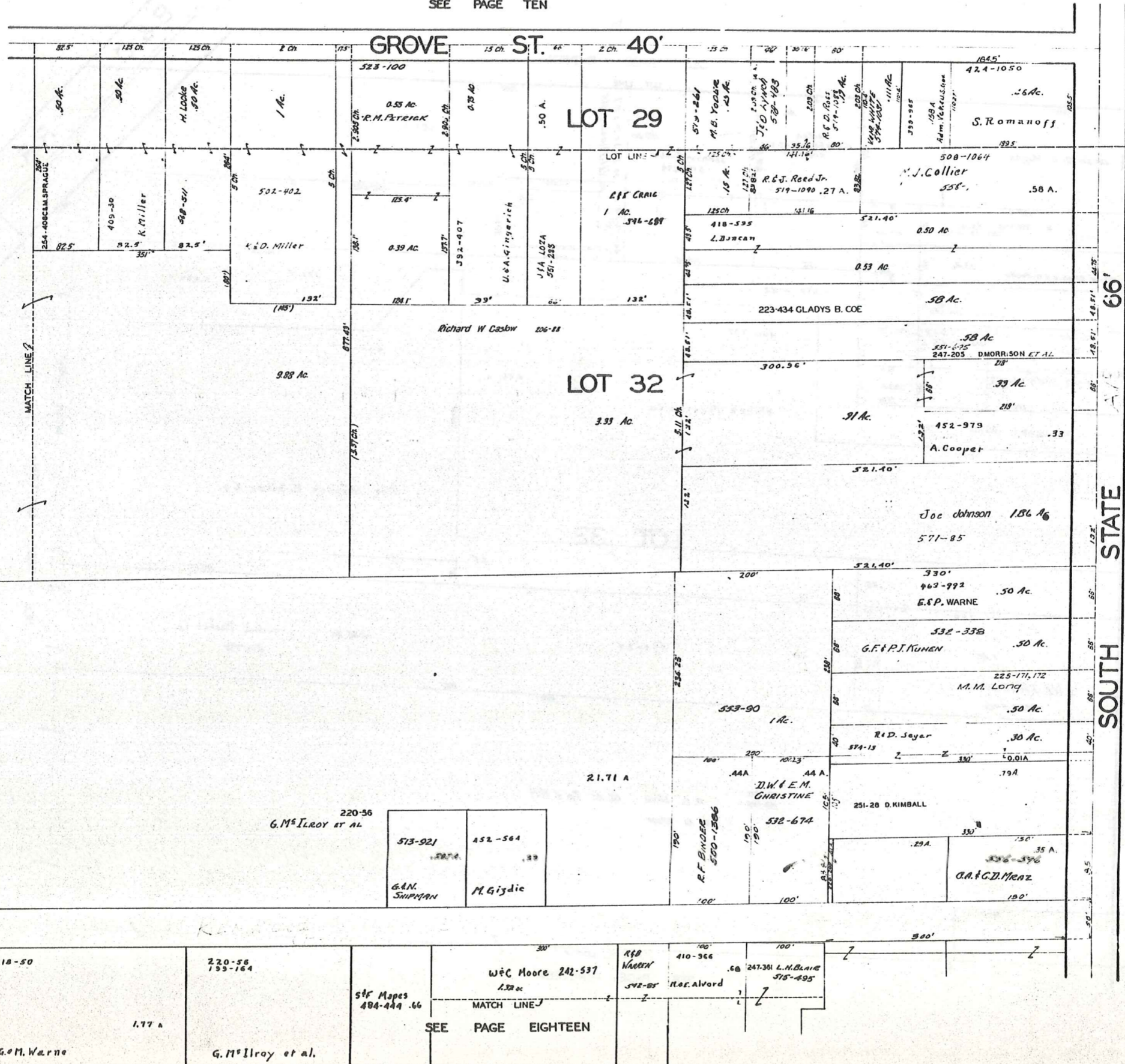
SEE PAGE SEVENTEEN

MIDDLEFIELD VILLAGE

SEE PAGE TEN

PAGE THIRTEEN

SEE MATCH LINE

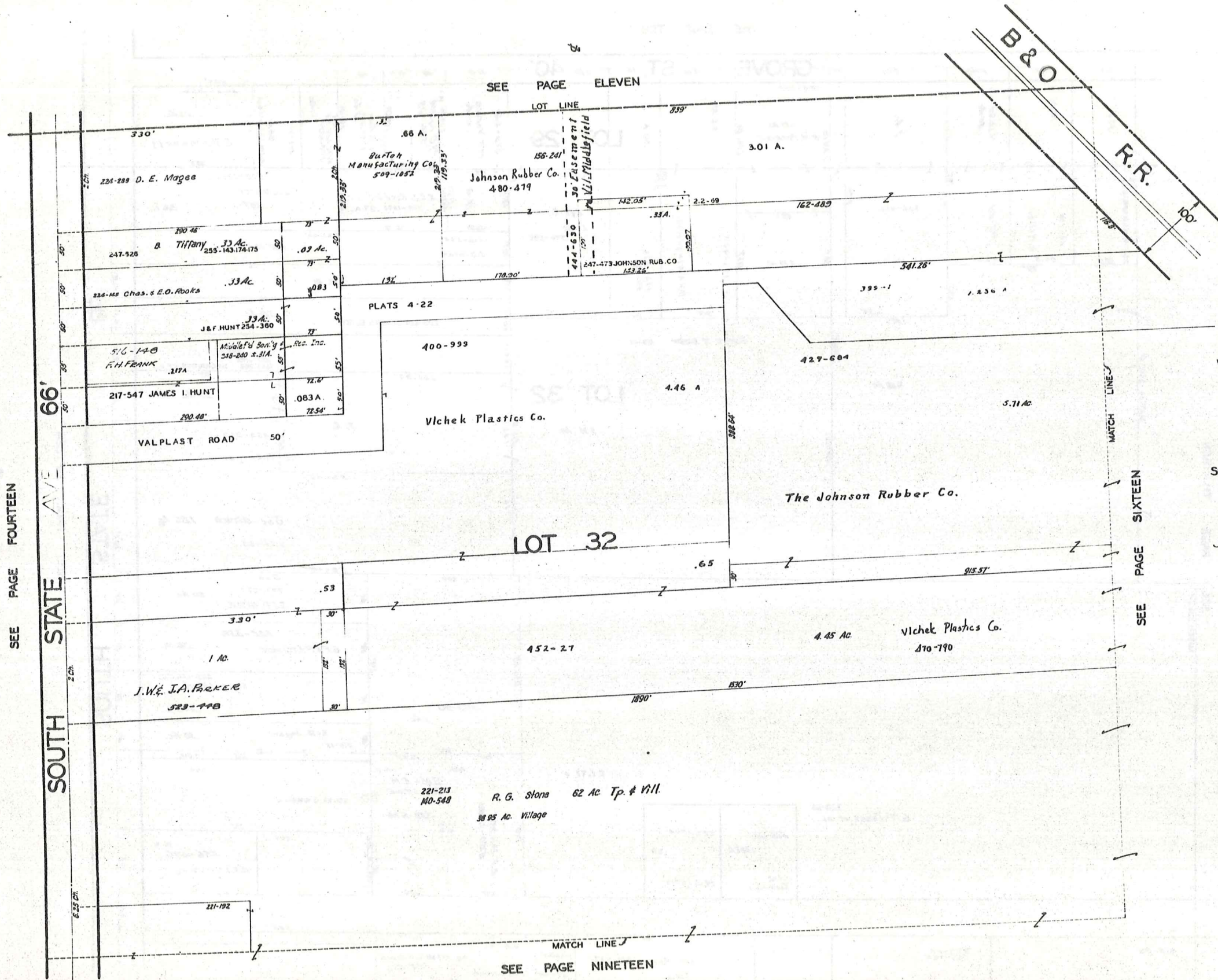


SCALE 1"=66'

JAN 1, 1976

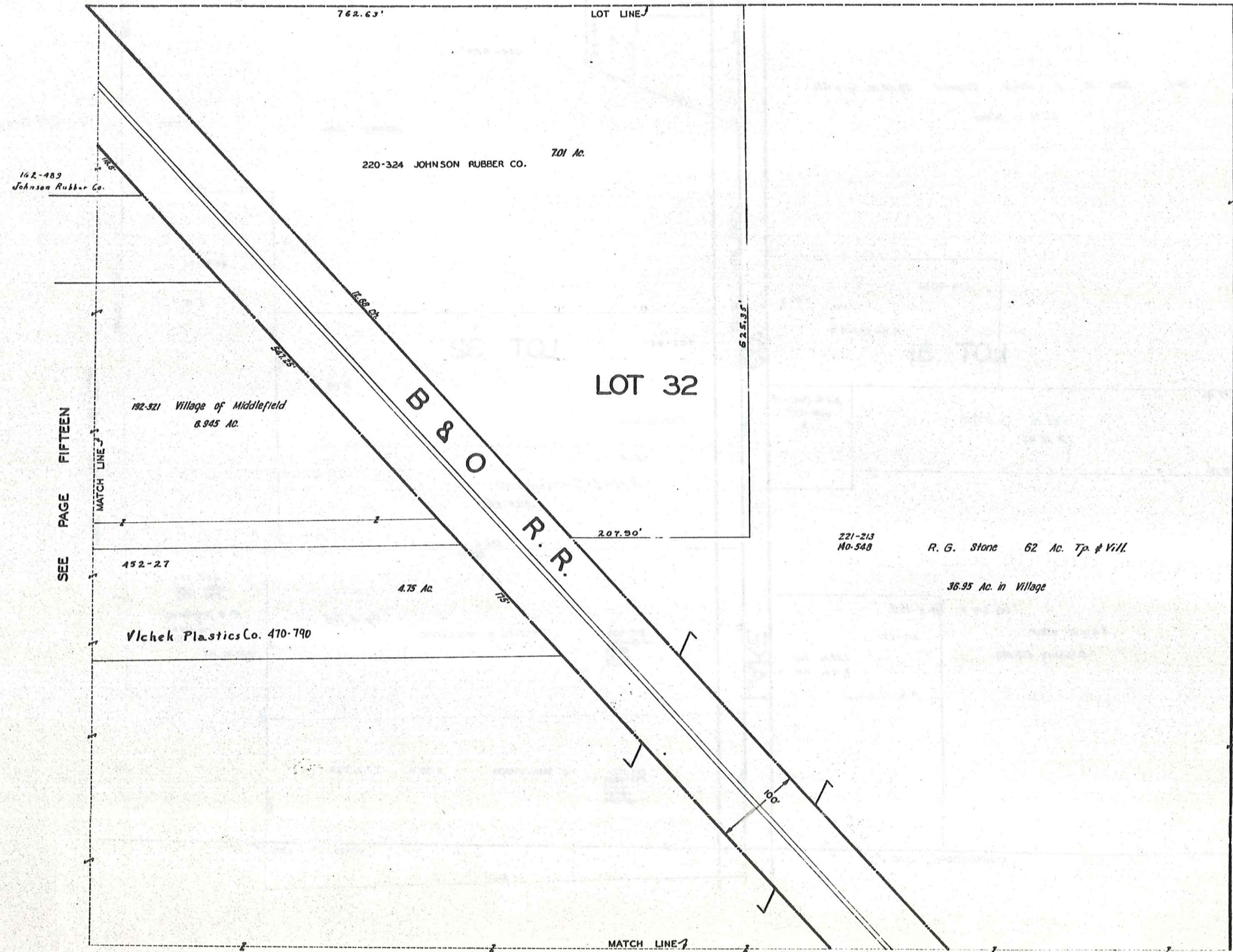
SEE PAGE FIFTEEN

SEE PAGE EIGHTEEN



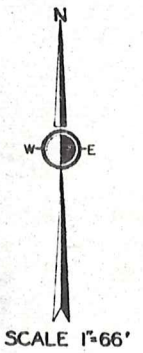
MIDDLEFIELD VILLAGE

SEE PAGE TWELVE



SEE PAGE FIFTEEN

SEE PAGE TWENTY



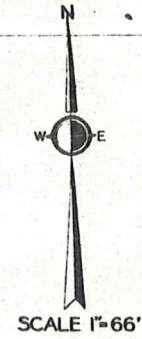
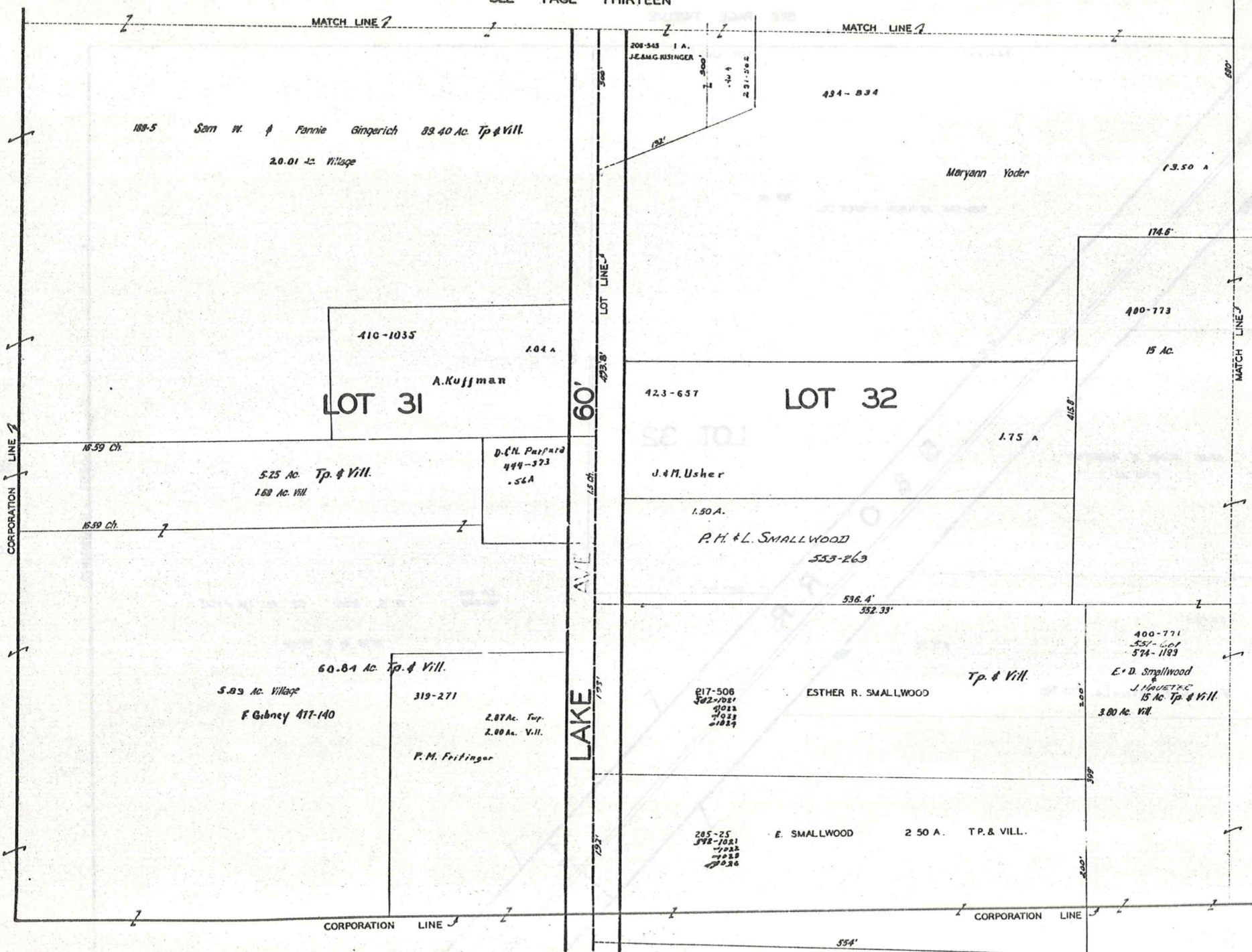
JAN 1, 1976

272

MIDDLEFIELD VILLAGE

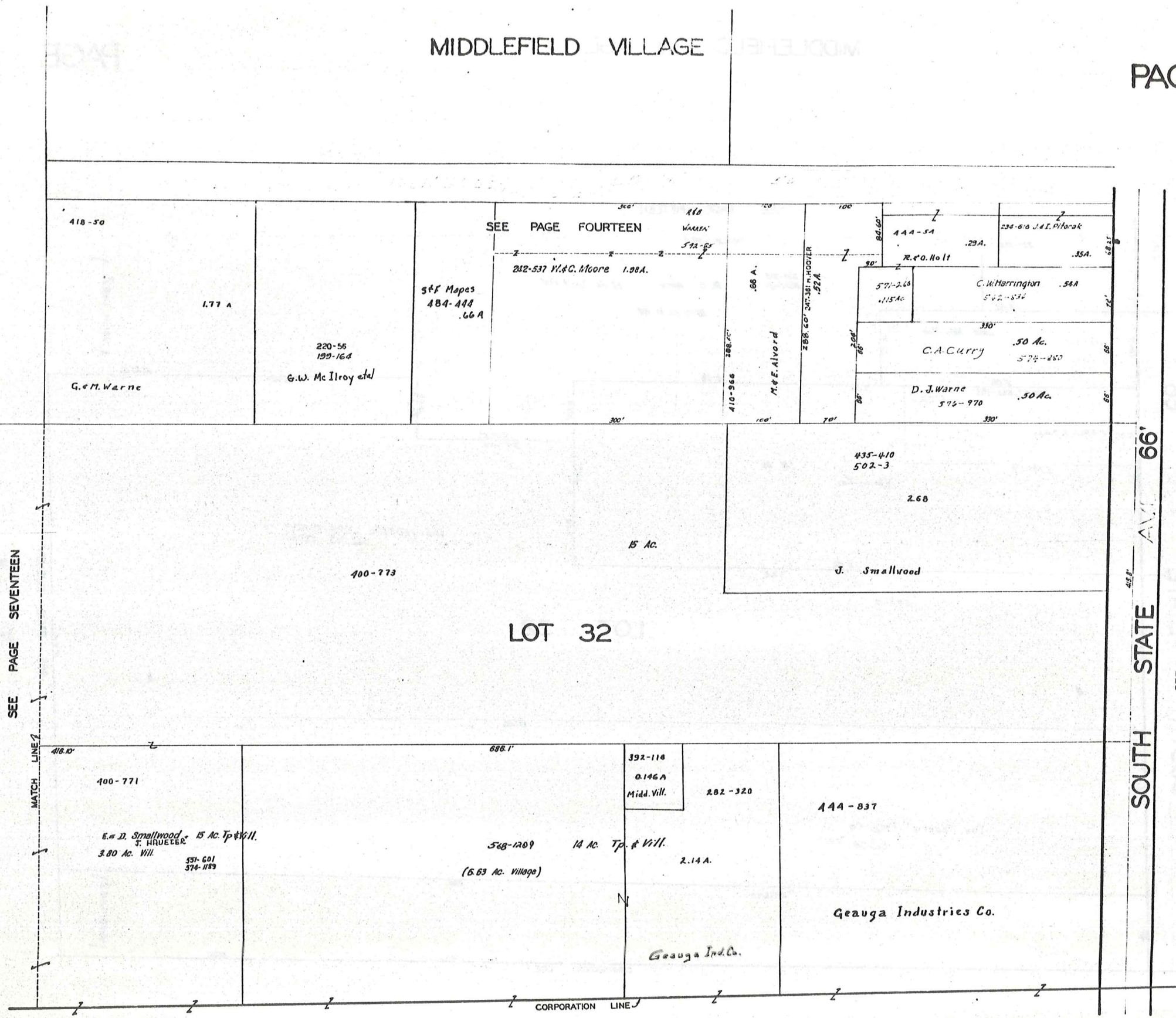
PAGE 16

SEE PAGE THIRTEEN



JAN . 1 . , 1976

SEE PAGE EIGHTEEN



SCALE 1"=66'

JAN 1, 1976

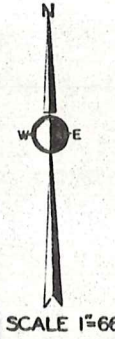
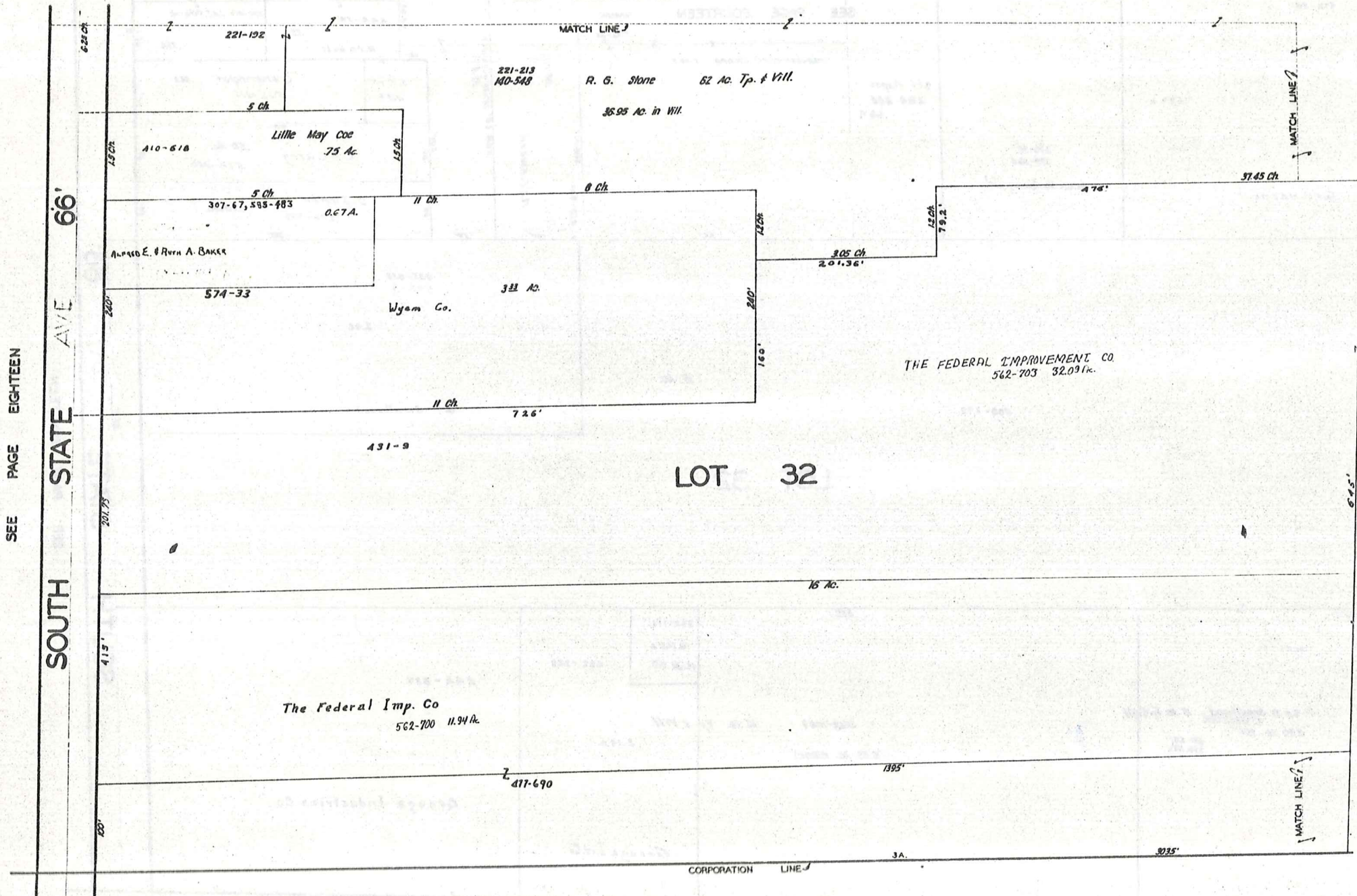
SEE PAGE SEVENTEEN

SEE PAGE NINETEEN

SOUTH STATE AVE 66'

PAGE 18

SEE PAGE FIFTEEN



SCALE 1"=66'

JAN 1, 1976

SEE PAGE SIXTEEN

MATCH LINE

221-213
MO-548 R. G. Stone 62 AC. Tp. 4 Vill.
35.95 Ac. in Village.

37.45 Ch. 930.5'

159-456 E. T. Steele Jr. et al
51.50 Ac. Tp. 4 Vill.
0.45 Ac. in Vill.

B & O R.R.

LOT 32

1.65 Ac. in Tp.

Federal Improvement Company

486-112 20.906 AC.

SEE PAGE NINETEEN

18 AC.

643.5'

3035'

CORPORATION LINE

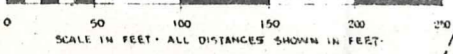
CORPORATION LINE



SCALE 1"=66'

JAN. 1, 1976

PLAT OF
M. & B. SUBDIVISION
IN
LOT NO. 22 & LOT NO. 29
MIDDLEFIELD VILLAGE
GEAUGA COUNTY OHIO
SCALE: 1 IN. = 50 FT.
IRON MONUMENTS LOCATED AT POINTS MARKED (*)

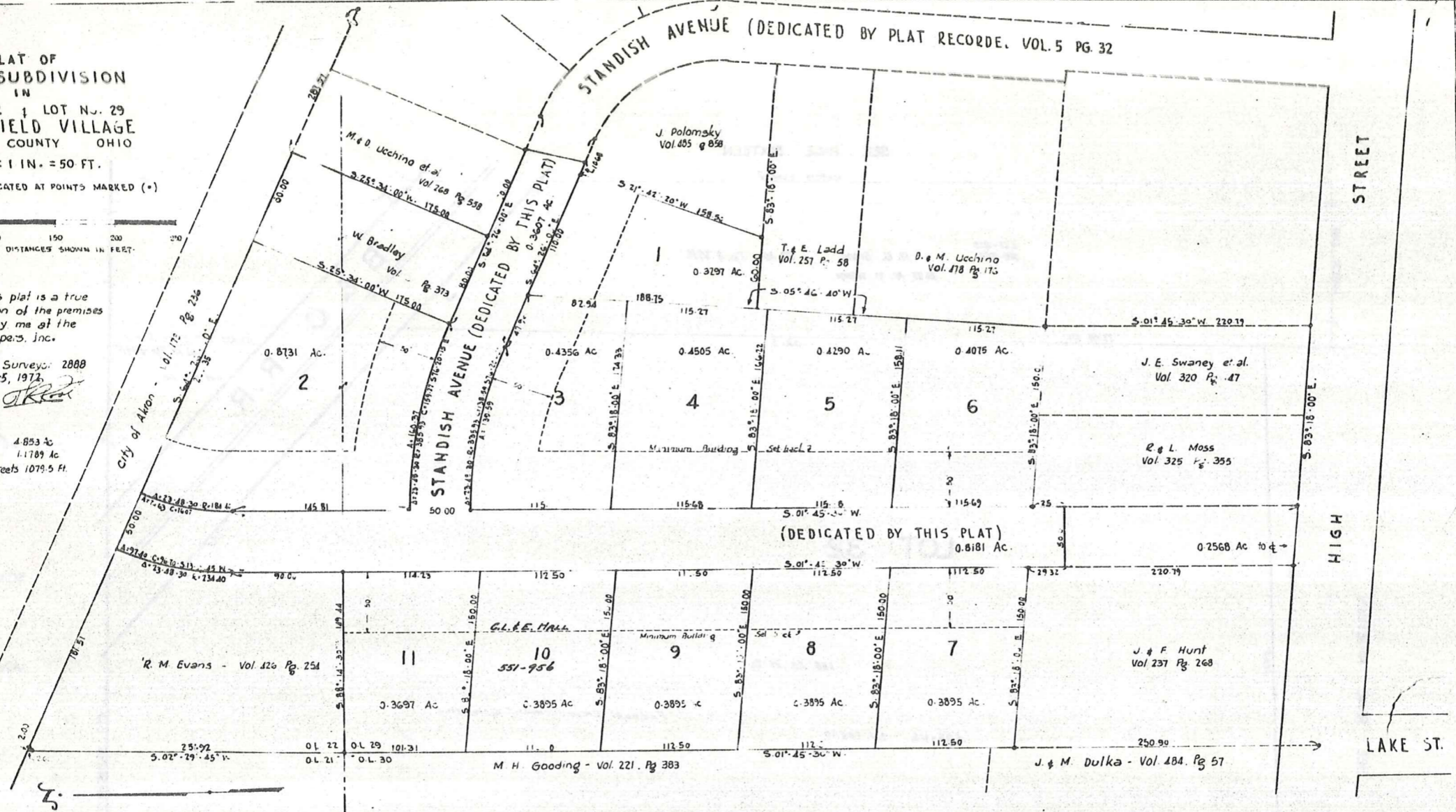


I hereby certify that this plat is a true and correct representation of the premises shown and was made by me at the instance of M & B Developers, Inc.

T. R. Root Registered Surveyor 2888
Chardon Ohio, June 5, 1973

T. R. Root

Total area of sub-lots 4.853 Ac
Total area of dedicated streets 1.1789 Ac
Total length of dedicated streets 1079.5 Ft.



M. & B. DEVELOPERS, INC. an Ohio corporation, owner of all the land proposed for subdivision shown hereon, claiming title by or through instrument recorded in volume 126, page 425, of Geauga County records of deeds, hereby accepts and adopts this plat and certifies that the same was prepared at its order and request. Said Corporation hereby dedicates to public use for highway purposes the area within the boundaries of Standish Avenue as the same are shown, and certifies that said area is free of all encumbrances. Said Corporation now requests acceptance of this Dedication and Subdivision by Middlefield Village, and that this Plat then be placed upon the records of Geauga County.

In witness whereof said Corporation sets its hand and Corporate seal at Ohio this 10 day of January, 1973
M. & B. DEVELOPERS, INC.
Witness _____ by _____ its _____
Witness _____ by _____ its _____

State of Ohio ss. Before me, a Notary Public in and for said County and State, personally appeared the above named M. & B. Developers, Inc. by _____ its _____ and _____ its _____ who acknowledged that they did sign the foregoing instrument, and that the same is the free act and deed of said Corporation and the free act and deed of each of them personally and as such officers. In testimony whereof I have hereunto set my hand and official seal at this _____ day of January, 1973

Notary Public

FOR MIDDLEFIELD VILLAGE
Acceptance recommended _____
Date _____ for _____
Acceptance recommended James A. Jack, P.E.
Date Jan. 26, 1973 for Village Engineer
Acceptance recommended _____
Date _____ for _____

The subdivision of land as shown on this Plat is accepted on behalf of Middlefield Village, and the land dedicated to public use is hereby accepted as such for said Village.

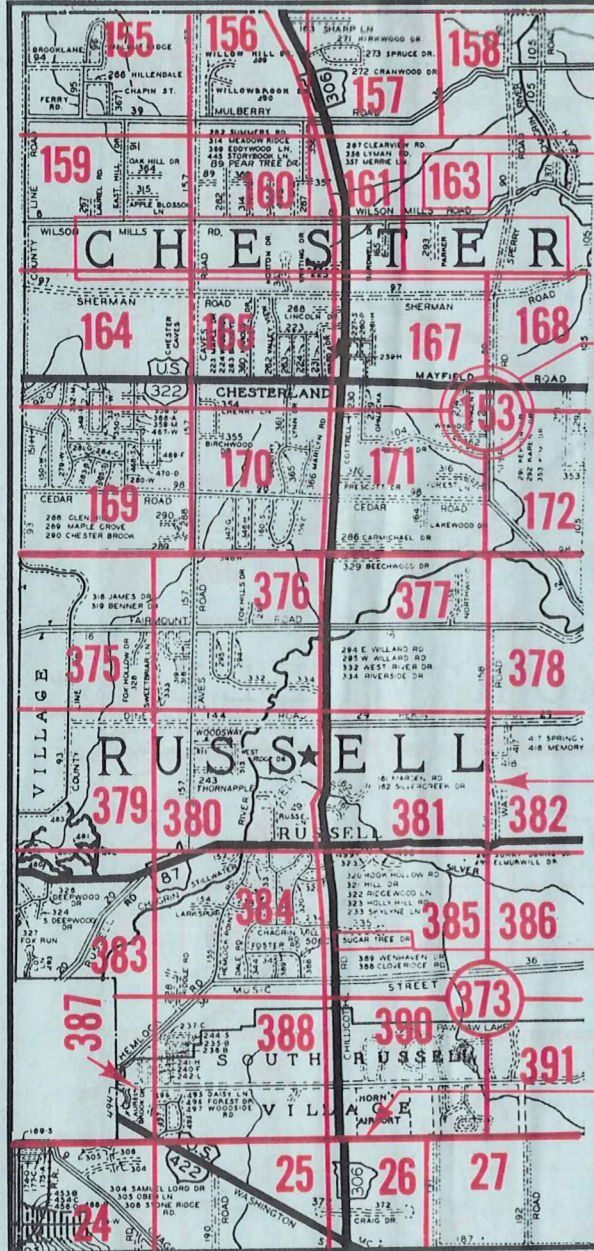
Mayor _____
Council President _____
Clerk _____
by Ord. #461 adopted _____ 1972

FOR GEAUGA COUNTY
Entered for transfer _____ 1973
Transferred _____ 1973

Auditor of Geauga County _____
Filed for Record _____ 1973
Recorded _____ 1973
Gauga County Plat Records
Recorder of Geauga County _____

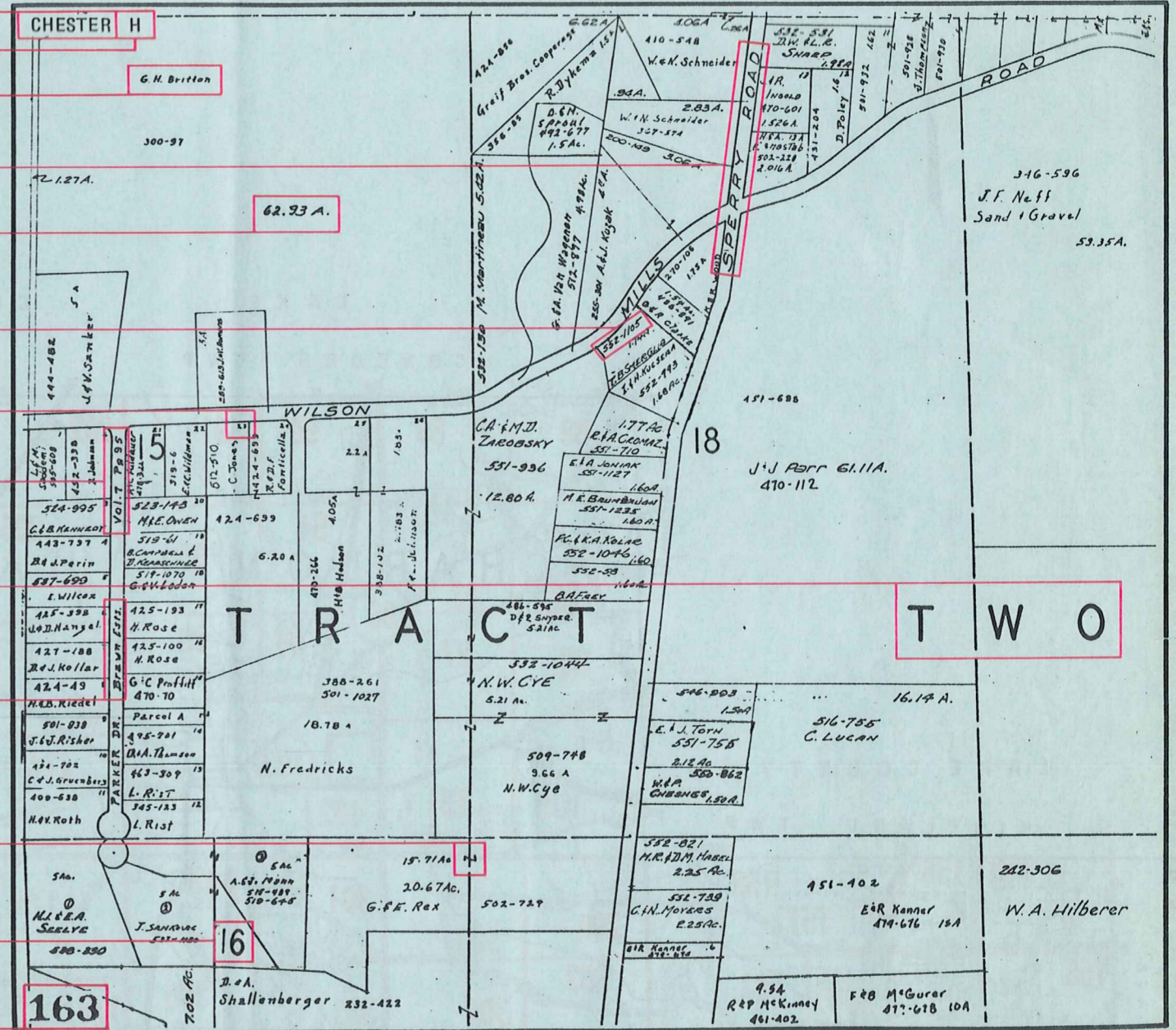
Explanation and Use Sheet for Geauga County, Ohio

SAMPLE (PARTIAL) COUNTY INDEX MAP



- Township Name
- Map Page Number (Or Letter)
- Owners Name
- Street Name
- Acreage
- Municipality Index Beginning Atlas Page Number
- Deed Book & Page
- Subdivision Lot Number
- Plat Book & Page
- Tract Number
- Atlas Page Boundary
- Subdivision Name
- Street Name
- Denotes Continuous Ownership
- Municipality Index Atlas Page Boundary
- Tract Lot Number
- Atlas Page Number

SAMPLE (PARTIAL) MAP PAGE



USE OF THE MAP VOLUME

1. LOCATE THE GENERAL AREA OF INTEREST ON THE COUNTY INDEX MAP, ATLAS PAGE 'B'.
2. **A. IF PROPERTY IS IN A TOWNSHIP**, NOTE THE ATLAS PAGE NUMBER. TURN TO THE PAGE INDICATED AND LOCATE SPECIFIC PARCEL OF INTEREST.
NOTE: ON SOME MAPS YOU MAY BE REFERRED TO A DETAIL SHEET SHOWING AN ENLARGEMENT OF THE AREA. THESE MAPS ARE FOUND AT THE END OF THE REGULAR MAP PAGES IN EACH TOWNSHIP EITHER IN ALPHABETICAL OR NUMERICAL SEQUENCE.
- B. IF PROPERTY IS IN A MUNICIPALITY**, REFER TO THE TABLE OF CONTENTS, ATLAS PAGE 'C', AND NOTE THE BEGINNING ATLAS PAGE NUMBER FOR THE MUNICIPALITY OF INTEREST.
 - (1) TURN TO THE PAGE INDICATED. ON THIS PAGE WILL APPEAR AN INDEX MAP FOR THAT MUNICIPALITY.
 - (2) LOCATE SPECIFIC AREA OF INTEREST AND NOTE THE MAP PAGE NUMBER.
NOTE: DO NOT CONFUSE THE MAP PAGE NUMBER WITH THE ATLAS PAGE NUMBER IN THESE MUNICIPALITIES.
 - (3) FOLLOW EITHER ALPHABETICAL OR NUMERICAL SEQUENCE TO THE MAP PAGE INDICATED AND LOCATE SPECIFIC PARCEL OF INTEREST.